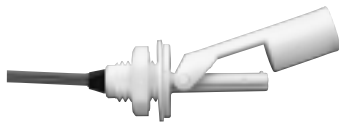


## Single Point Level Switches LS-7

### Small Size - Engineered Plastics, Side Mount

LS-7 Series - Compact side mounts are the solution to many small tanks. These low-cost units are ideal for high volume use in small tanks and vessels. Engineered plastics construction offers broad compatibility in water, oils and chemicals. The high temperature capability of Versaplast offers an alternative to high cost stainless steel switches.



**Type 3**  
Internal Mounting



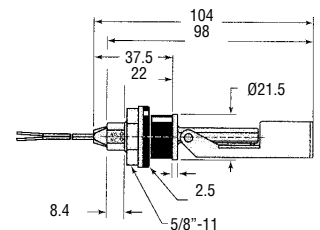
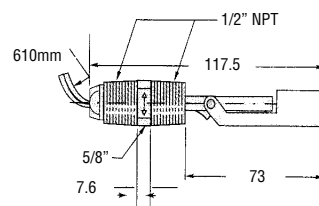
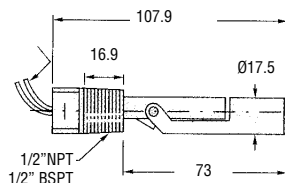
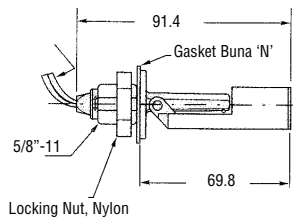
**Type 5**  
External Mounting



**Type 7**  
External Mounting



**Type 10**  
External Mounting  
Mounts and seals through non-threaded hole  $\varnothing 22$  using an HNBR compression gasket. Wall thickness 0.5 to 4mm.



### Specifications

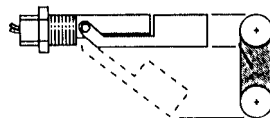
	Type 3	Type 5	Type 7	Type 10
<b>Materials</b>				
<b>Stem/Mounting</b>	Versaplast Polypropylene** Nylon*	Versaplast Polypropylene** Nylon*	Polypropylene** Nylon*	Versaplast Polypropylene** Nylon*
<b>Lead Wire Jacket</b>	PVC	PVC	TPE***	TPE***
<b>Min. specific gravity of the liquid</b>	Versaplast 0.80 PP 0.55 Nylon 0.65	0.80 0.55 0.65	0.55 0.65	0.80 0.55 0.65
<b>Operating Temperature</b>	Versaplast -40°C to 121°C PP -40°C to 107°C Nylon -40°C to 121°C	-40°C to 150°C -40°C to 107°C -40°C to 121°C	-40°C to 107°C -40°C to 121°C	-40°C to 121°C -40°C to 107°C -40°C to 121°C
<b>Operating Pressure Max.</b>	7 bar	7 bar	7 bar	3.5 bar
<b>Switch SPST</b>	20 VA	20 VA	20 VA	20 VA
<b>Lead Wire Gauge (Approx 0.6m long)</b>	22 AWG	22AWG (18AWG Nylon)	18 AWG	22 AWG
<b>Float Arc</b>	55mm	32mm	38mm	53mm
<b>Protection Rating</b>	IP64	IP64	IP65	IP65
<b>Weight approx.</b>	80g	60g	70g	90g

\* Not suitable for long term use in water. \*\* Not suitable for Hydrocarbons \*\*\* Thermoplastic Elastomer Zip Cord

Versaplast (Ryton [80%] + Nylon [20%]) is suitable for both water and Hydrocarbons

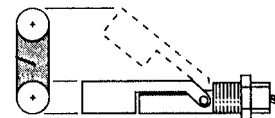
By rotating the switch 180°, the switch operation can be Normally Open or Normally Closed. Arrows on exterior of mounting indicate NO when pointing up.

Normally Open



When the switch is mounted so that the float lowers with the liquid level, the switch is NO

Normally Closed



When the switch is mounted so that the float rises with the liquid level, the switch is NC

### Order data

	Type 3	Type 5 NPT	BSPT	Type 7 NPT	Type 10
<b>Polypropylene</b>	164520	131100	189423	160450	165800
<b>Nylon</b>	165570	140620	189421	160460	165900
<b>Versaplast</b>	182600	177100	189422		182700

### Meyer Industrie-Electronic GmbH - MEYLE

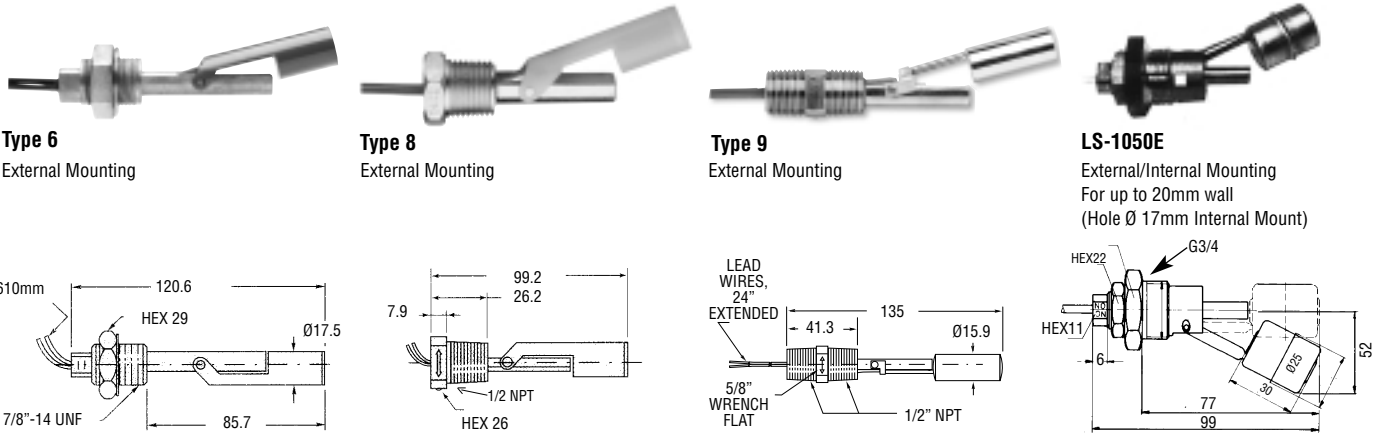
Carl-Bosch-Straße 8  
49525 Lengerich/Germany  
Internet: www.meyle.de

Tel.: (+49) 0 54 81/93 85-0  
Fax: (+49) 0 54 81/93 85-12  
E-Mail: sales@meyle.de

# Single Point Level Switches LS-7, LS-1050E

Small Size - Compact Alloy and Alloy Plastics Side Mount

Built for durability, our LS-7 Series switches utilize stainless steel, zinc or aluminium bodies. Ideal for any small tank or vessel destined for a rugged development.



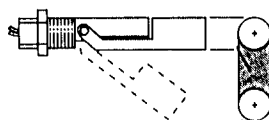
## Specifications

	Type 6	Type 8	Type 9	LS-1050E
<b>Materials</b>				
<b>Stem/Mounting</b>	Aluminium	Zinc	316 S Steel	Brass
<b>Float</b>	Nylon*/Polysulfone	Nylon*/Polypropylene**	316 S Steel/Nylon*/Polypropylene**	S Steel
<b>Lead Wire Jacket</b>	PVC	TPE***	TPE***	PVC
<b>Min. specific gravity of the liquid</b>	0.65 Nylon 0.75 PSU	0.65 Nylon 0.55 PP	0.80 S Steel 0.65 Nylon 0.55 PP	0.7 S Steel
<b>Operating Temperature -40°C to</b>	121°C Nylon 107°C PSU	120°C Nylon 107°C PP	149°C S Steel 121°C Nylon 107°C PP	+100°C
<b>Operating Pressure Max.</b>	7 bar Nylon 10 bar PSU	7 bar Nylon 10 bar PP	20 bar S Steel 7 bar Nylon / PP	16 bar
<b>Switch SPST</b>	10 VA	20 VA	20 VA	50 VA
<b>Lead Wire Gauge (Approx 0.6m long)</b>	22 AWG	22AWG	18 AWG	Cable 0.34mm <sup>2</sup> (approx 1m long)
<b>Float Arc</b>	36mm	36mm	36mm	36mm
<b>Protection Rating</b>	IP64	IP65	IP65	IP65
<b>Weight approx</b>	150g	150g	150g	300g

\*\*\* Thermoplastic Elastomer Zip Cord \* Not suitable for long term use in water. \*\* Not suitable for Hydrocarbons

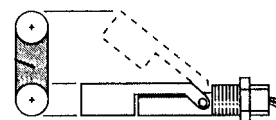
By rotating the switch 180°, the switch operation can be Normally Open or Normally Closed. Arrows on exterior of mounting indicate NO when pointing up. When the switch is mounted so that the float rises with the liquid level, the switch is NC. When the switch is mounted so that the float lowers with the liquid level, the switch is NO.

Normally Open



When the switch is mounted so that the float lowers with the liquid level, the switch is NO

Normally Closed



When the switch is mounted so that the float rises with the liquid level, the switch is NC

## Order data

	Type 6	Type 8	Type 9	LS-1050E
<b>Nylon Float</b>	155660	160950	164850	
<b>Polysulfone Float</b>	155680			
<b>Polypropylene Float</b>		162795	164860	
<b>S Steel Float</b>			164870	011-1050

### Meyer Industrie-Electronic GmbH - MEYLE

Carl-Bosch-Straße 8  
49525 Lengerich/Germany  
Internet: www.meyle.de

Tel.: (+49) 0 54 81/93 85-0  
Fax: (+49) 0 54 81/93 85-12  
E-Mail: sales@meyle.de