

## FS-6 0.4 - 6.0 (l/min) with pre-adjusted set points

The FS-6 range of flow switches provides economical flow protection for a wide range of industrial applications such as photocopiers, heavy-duty floor cleaners and industrial dishwashers. The European integral G 1/4" connections obviate the need for additional adaptors and the design allows for easy mounting.

### Specifications (All pressure data related to water at +20 °C)

<b>Max. flow</b>	12 l/min
<b>Max. operating pressure</b>	30 bar at +20 °C 16 bar at +50 °C 13 bar at +70 °C 5 bar at +85 °C
<b>Proof pressure</b>	45 bar
<b>Max. temperature</b>	+85 °C
<b>Set points</b>	see order number
<b>Switching function (related to increasing flow)</b>	NC, NO, SPDT
<b>Factory mounting position with set point adjustment</b>	vertical, inlet port down
<b>Repeatability</b>	±1%
<b>Adjustment accuracy</b>	±15%
<b>Hysteresis</b>	max. 20%
<b>Mounting</b>	G1/4"
<b>Electrical connections</b>	cable: PVC, 0.34 mm <sup>2</sup> (length: approx. 1 m)
<b>Enclosure</b>	IP 65
<b>Electrical data contact rating</b>	NC/NO: 100 VA, 3 A, 220 V~ SPDT: 20 VA, 0.5 A, 250 VA
<b>Weight:</b>	0.16 kg

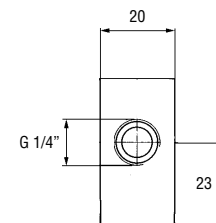
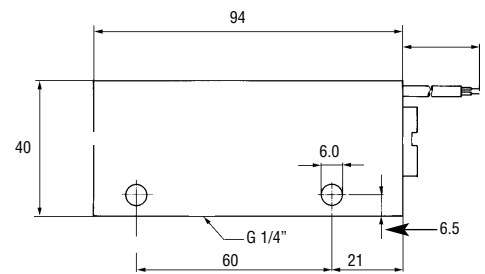
**Please note:** For mineral oil applications please order brass piston instead of polysulphone piston.  
Add GE169 to order number e.g. 020-0290 - GE169

### Order numbers

set points (l/min)	order number		
	NO	NC	SPDT
0.4	020-0290	020-0297	020-0304
1.0	020-0291	020-0298	020-0305
2.0	020-0292	020-0299	020-0306
3.0	020-0293	020-0300	020-0307
4.0	020-0294	020-0301	020-0308
6.0	020-0295	020-0302	020-0309



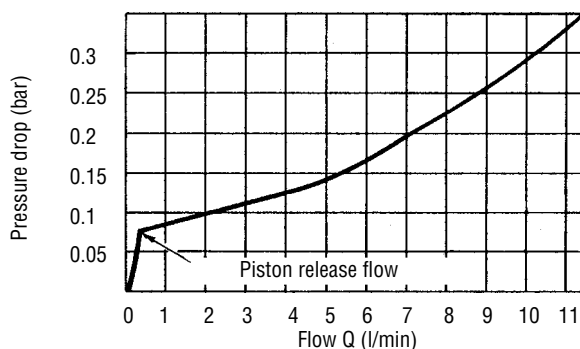
### Dimensions (in mm)



Housing: Delrin®  
Piston: Polysulfone\*  
Spring: Stainless Steel  
O-Ring: Viton®

\* Option Brass

### Pressure drop diagram (at min. set point adjustment)



### Wiring diagram

